



# DEPARTMENT OF STATISTICS UNIVERSITY OF DELHI

## PLACEMENT BROCHURE BATCH OF 2023-25



**Two - Year Post Graduation Programme in Statistics**

# TABLE OF CONTENTS

1. From the Head's Desk	01	9. Why Hire Us?	18
2. About Us	02	10. Placement Records	21
3. Infrastructure	03	11. Summer Internships	22
4. Faculty Profile	04	12. Past Recruiters	23
5. Societies	06	13. Our Notable Alumni	26
6. Course Structure	10	14. Sessions Conducted	29
7. Course Highlights	12	15. Batch Details	32
8. Focus Areas	15	16. Contact Us	43



# FROM THE HEAD'S DESK



**Prof. Ranjita Pandey**

Dear Reader,

Welcome to the Department of Statistics at University of Delhi. We started our journey in the year 1973. Over the past four decades, we have grown our expertise and competence in the core Statistics curriculum and research. Needless to say, this programme has stood the test of time and has been accorded its due place in the corporate world as well as academic. Through this brochure, we present a sketch of the Department and its activities. Further, the curriculum taught covers a wide range of applications required by the industry. The primary focus of our curriculum is designed to impart technical know-how to the students, promote their problem solving skills and make them ready to implement the theory for their work assignment. The curriculum is designed to provide a wide spectrum of options to the students to pursue their interests both in applied and theoretical aspects of the subject. The course contents are periodically updated by introducing newer papers and by updating the existing papers and technical developments in the subject. Department of Statistics looks forward to contribute in providing analytical solutions to industry and society related diverse issues.

Thank you for visiting us.

Prof. Ranjita Pandey

Head of the Department, Department of Statistics

# ABOUT US

## University of Delhi

The University of Delhi is a premier university in the country with a venerable legacy and international acclaim for the highest academic standards, diverse educational programmers, distinguished faculty, illustrious alumni, varied co-curricular activities, and modern infrastructure. It was established in 1922 and has sustained the highest global standards and best practices in higher education.

It offers courses in 86 departments, spreads across two campuses in Delhi, and enrolls over 7 lakh students. The University has been ranked at the 6th position in the country as per the Centre for World University Ranking (CWUR) 2023 and is 11th in the National Institutional Ranking Framework 2023.

In the QS World University Rankings-2025, UoD occupies 328th place. It holds 7th position in the nation & 1st position among central universities. The University of Delhi has been ranked at 6th position among the top 25 Central Universities and 3rd among the top 100 universities by Outlook ICARE India University Rankings 2021. The rankings are based on indicators like academic and employer reputation, research and internationalization.

## Department of Statistics

The Department of Mathematical Statistics was established in August 1973, though the teaching of M.A. in Mathematical Statistics had been introduced as early as in July 1957 at the initiative of Professor Ram Behari as part of a development programme adopted by the Department of Mathematics. Professor H.C. Gupta was the first head of the Department.

In 1971, the scope of post-graduate courses in Mathematical Statistics was extended leading to M.Sc. degree in Statistics and in 1987, the Department of Mathematical Statistics was re-named as the Department of Statistics. The Department currently offers post-graduate (M.A./M.Sc.), M.Phil. and Ph.D. programmes in Statistics. The Department takes pride in the fact that students get suitable placements in Research Institutes/Industries/Govt. Departments and a significant number of students are selected in the prestigious Indian Statistical Services (ISS) each year.



# INFRASTRUCTURE

## Library



The Central Science Library's extensive resources are an invaluable aid to both students and faculty. The library houses more than two titles and subscribes to over 500 nationally and internationally acclaimed magazines, periodicals, and journals with archives of over two decades. The department also has its own library and internet facility.

## Seminar Rooms



Seminar rooms are available to encourage discussion and enable group work and other collaborative learning projects. These rooms are equipped with modern audio-visual facilities, including LCD projectors and microphone sets for an enriched experience of an e-classroom.

## Computer Labs



The Computer Labs of our department have well-equipped computing resources and highly competent faculty. They provide a thorough hands-on experience in data handling and statistical packages/tools for problem-solving. Students are trained in various computer languages and statistical tools required by the industries today.



# FACULTY PROFILE



**Prof. Ranjita Pandey**  
**Head of the Department**

**Qualification:** D.Phil. University of Allahabad, Uttar Pradesh

**Specialized Field:** Event Modelling, Bayesian Inference, Demography, Survival Analysis, and Lifetime Distributions



**Dr. Girish Chandra**  
**Associate Professor**

**Qualification:** M.Sc. (Statistics), Ph.D. (Statistics), Kumaun University, Nainital

**Specialized Field:** Sampling Methods, Probability Theory, Forestry Statistics, Applied Statistics



**Dr. Mahendra Saha**  
**Associate Professor**

**Qualification:** M.Sc. Statistics, Ph.D. Statistics (Actuarial) Visva-Bharati University, West Bengal

**Specialized Field:** Industrial Statistics, Lifetime Data Analysis, Distribution Theory, Reliability Theory, and Survival Analysis



**Prof. Poonam Singh**  
**Senior Professor**

**Qualification:** Ph.D., University of Delhi, Delhi

**Specialized Field:** Design of Experiments, Generalized Linear Models, Optimization, Statistical Quality Control and Operations Research



**Dr. Devendra Kumar**  
**Associate Professor**

**Qualification:** M.Sc., M.Phil., Ph.D. (Statistics) AMU, MPS, IIPS, Mumbai

**Specialized Field:** Distribution Theory, Statistical Inference - Classical and Bayesian, Record Statistics, Survival Analysis, Reliability Theory, Order Statistics



**Dr. Dreamlee Sharma**  
**Assistant Professor**

**Qualification:** M.Sc. (Gold Medalist), Ph.D. (Statistics) from NEHU Shillong

**Specialized Field:** Quantile Function based Statistical Modelling, Regression Analysis, Distribution Theory, Computational Statistics

# FACULTY PROFILE



**Dr. Manoj Kumar**  
**Assistant Professor**

**Qualification:** M.Phil., Ph.D., Banaras Hindu University, Varanasi

**Specialized Field:** Bayesian Inference, Ecological Modelling, Survival and Reliability Estimation



**Dr. Suman Jaiswal**  
**Assistant Professor**

**Qualification:** M.Phil., Ph.D., Chaudhary Charan Singh University, Meerut

**Specialized Field:** Reliability Modelling, Bayesian Inference, Applied Statistics, Probability Theory



**Dr. Sumit Kumar**  
**Assistant Professor**

**Qualification:** M.Sc. (Statistics), Chaudhary Charan Singh University Meerut, Ph.D. (Statistics), Central University of Rajasthan, Ajmer

**Specialized Field:** Statistical Quality Control, Applied Statistics, Bayesian Inference, Distribution Theory



**Dr. Zuber Akhter**  
**Assistant Professor**

**Qualification:** M.Phil., Ph.D., Aligarh Muslim University, Aligarh, Uttar Pradesh

**Specialized Field:** Order Statistics, Records, Generalized Order Statistics, Statistical Inference



# SOCIETIES

## CREDENCE: THE PLACEMENT CELL

The Placement Cell was formed in 1990 and was named Credence in 2016. Credence comprises of students who form the corporate interface of the Department, i.e., they act as a liaison between the corporate world and the student community.

The primary responsibility of Credence is to facilitate the Summer Internship and Final Placement process held at the Department. Mentoring the students through mock aptitude tests providing them with the Companies' recruitment criteria, managing the profile database of the students, and pushing for industry-student interactions through webinars and presentations are tasks that the Placement Cell is concerned with.



**Dr. Devendra Kumar**  
Co-ordinator  
Credence:  
The Placement Cell



**Dr. Mahendra Saha**  
Co-ordinator  
Credence:  
The Placement Cell

## PLACEMENT COORDINATORS



**Harsh  
Jain**



**Karan  
Sharma**



**Mitushi  
Middha**



**Priya  
Jain**



**Samrendra**



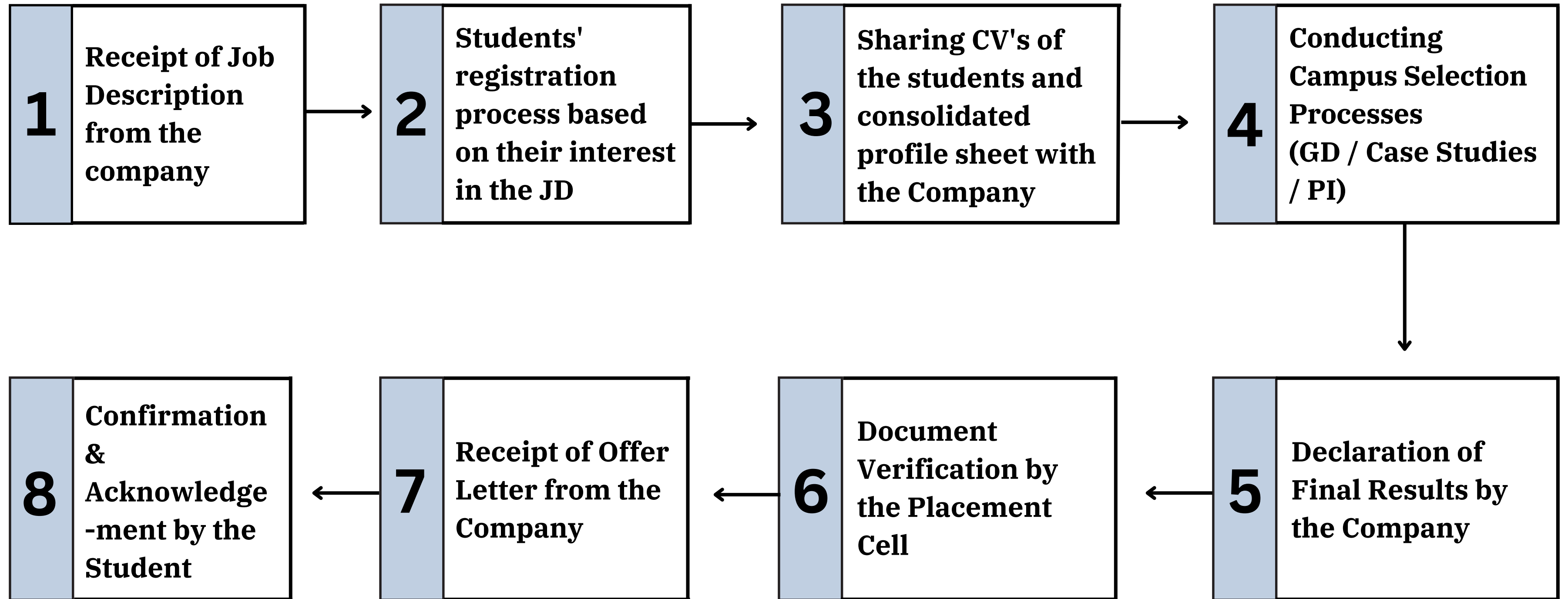
**Shreya  
Chakraborty**



**Yusuf  
Ahmed**



# RECRUITMENT PROCEDURE



# SOCIETIES

## UDAAN- THE SOCIO-CULTURAL CELL



**Dr. Sumit Kumar**

Co-ordinator  
Udaan



**Dr. Manoj Kumar**

Co-ordinator  
Udaan

Udaan empowers students to transcend academics by fostering leadership, teamwork, and communication skills. Through workshops, diverse activities, and festive celebrations, Udaan cultivates well-rounded individuals who contribute meaningfully to the department and society.

Engaging Activities:

**Social Awareness:** Blood donation camps, cloth drives, and environmental campaigns instill social responsibility.

**Cultural Events:** Fresher's, farewells, Basant Panchami celebrations, and "Ulhaas" (Ethnic Day) showcase cultural diversity.

**Knowledge Sharing:** Alumni meets, workshops, lectures, and gender sensitization programs promote intellectual growth and community engagement.



## THE HERITAGE CLUB



**Dr. Suman Jaiswal**

Co-ordinator  
The Heritage Club



**Dr. Dreamlee Sharma**

Co-ordinator  
The Heritage Club

Established in 2017, the Heritage Club's mission is to revive India's rich heritage and culture, fostering a deep appreciation among students for its historical significance. Organizing various events throughout the year, such as Heritage Walks, sports days, and yoga sessions on National Sports Day and International Yoga Day, the club promotes holistic student development. Rangoli making during Diwali and activities like quizzes and poetry contests on International Mother Language Day celebrate cultural diversity and artistic expression. On National Youth Day, successful alumni share their experiences, inspiring students. These activities serve as heritage windows, nurturing students' mental and physical well-being while enhancing their awareness of India's historical journey.



## INFINITY- THE SOCIAL MEDIA CELL



**Dr. Zuber Akhter**

Co-ordinator  
Infinity

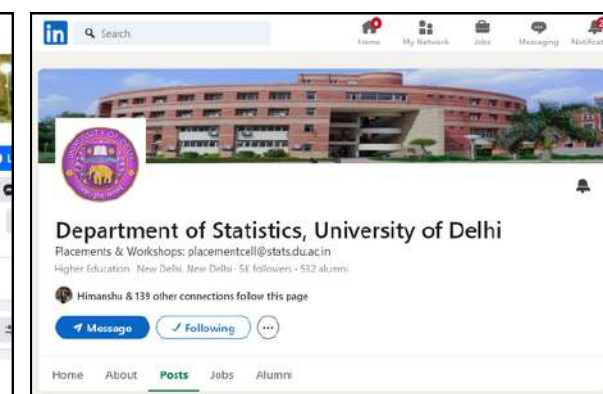


**Dr. Sumit Kumar**

Co-ordinator  
Infinity

Infinity - The Social Media Cell: Established in 2020, plays a crucial role in managing the department's digital presence across major platforms like LinkedIn and Facebook.

Infinity Cell serves as a strategic bridge between the department's academic activities and the broader community. Additionally, it acts as a central platform for integrating and promoting the initiatives of the department's three flagship clubs: Credence, Udaan, and The Heritage. Through these efforts, Infinity Cell significantly contributes to the department's visibility and influence in the digital sphere, supporting its mission of academic excellence and community engagement.

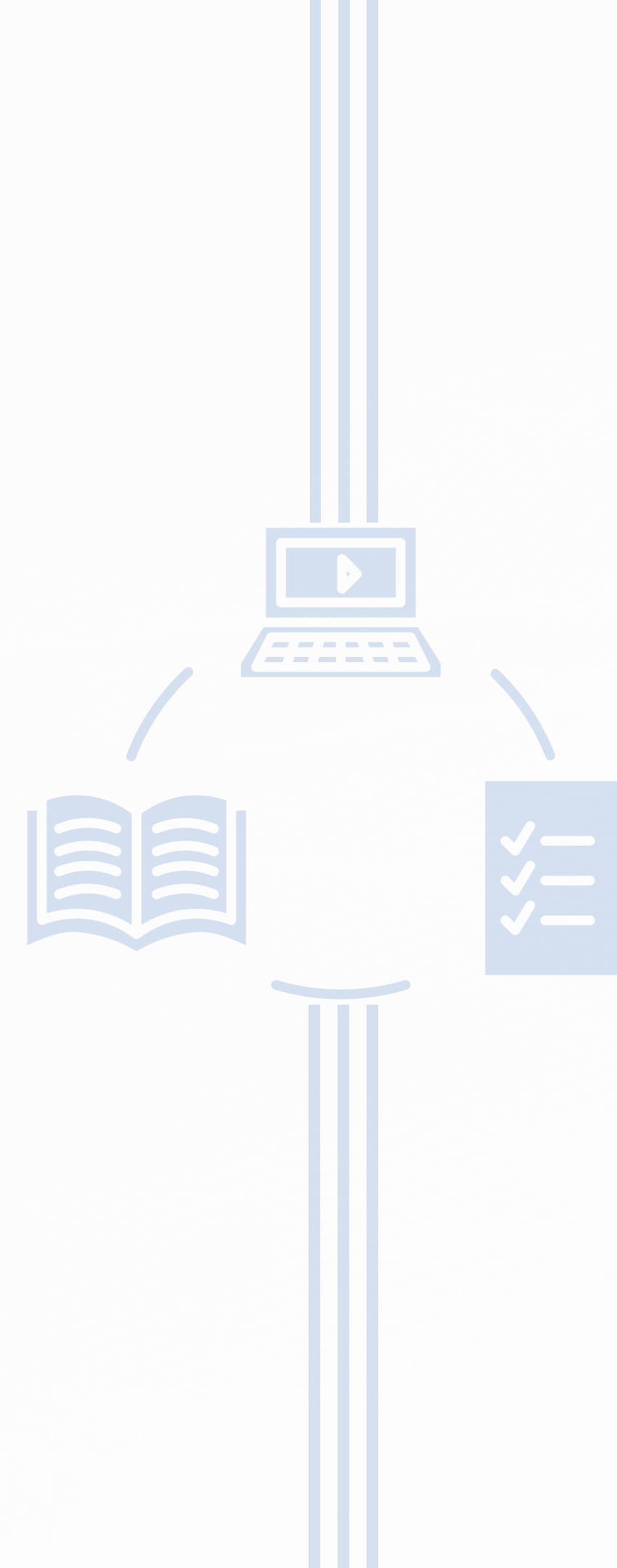




# **COURSE**

---

# **STRUCTURE**



# COURSE STRUCTURE

## SEMESTER

I

### **THEORY:**

Analysis  
Probability Theory  
Statistical Methodology  
Survey Sampling

### **PRACTICALS:**

Data Analysis - I (Using Excel)  
Statistical Computing - I (Using C)

## SEMESTER

III

### **THEORY:**

#### ***CORE:***

Statistical Inference - II  
Multivariate Analysis  
Generalized Linear Algebra

#### ***ELECTIVES:***

Biostatistics  
Operational Research  
Non-Parametric Inference  
Financial Statistics

### **PRACTICALS:**

Statistical Computing - II (Using R Software)  
Problem Solving using SPSS - I

## SEMESTER

II

### **THEORY:**

Linear Algebra  
Stochastic Processes  
Statistical Inference - I  
Design of Experiments

### **PRACTICALS:**

Data Analysis - II (Using Excel)  
Problem Solving using C Language

## SEMESTER

IV

### **THEORY:**

#### ***CORE:***

Econometrics and Time Series Analysis  
Demography, Statistical Quality Control and Reliability

#### ***ELECTIVES:***

Applied Stochastic Processes  
Order Statistics  
Bayesian Inference  
Advanced Survey Sampling Theory  
Advanced Theory of Experimental Designs  
Advanced Statistical Computing and Data Mining

### **PRACTICALS:**

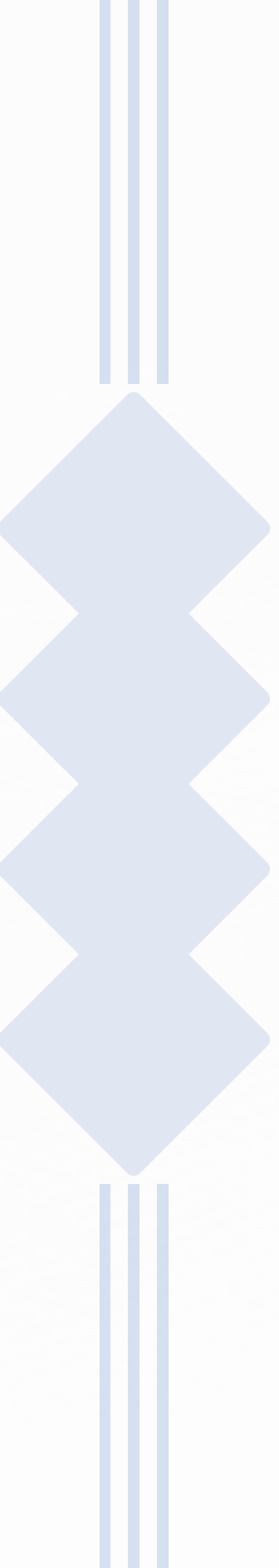
Problem Solving using R software - II  
Problem Solving using SPSS - II



**COURSE**

---

**HIGHLIGHTS**



# THEORETICAL STATISTICS

The 2-year M.Sc. Statistics Programme seamlessly integrates essential training in statistical methods with real-world applications, effectively meeting the specific needs of various industries.

<b>BAYESIAN INFERENCE</b> <ul style="list-style-type: none"><li>• Prior Elicitation and Posterior Analysis</li><li>• Computing Loss and Risk Function</li><li>• Point and Interval Estimation</li><li>• Hypothesis Testing</li><li>• Predictive Inference</li></ul>	<b>MULTIVARIATE ANALYSIS</b> <ul style="list-style-type: none"><li>• Multivariate Normal Distribution</li><li>• Wishart matrix</li><li>• Hotelling’s T2 statistics</li><li>• Factor and cluster analysis</li><li>• Multivariate Regression</li></ul>	<b>ORDER STATISTICS</b> <ul style="list-style-type: none"><li>• Distribution Theory</li><li>• Order Statistics as Markov Chain</li><li>• Asymptotic Distribution</li><li>• Random division of an interval</li><li>• Rank order statistics related to simple random walk</li></ul>	<b>PROBABILITY THEORY</b> <ul style="list-style-type: none"><li>• Random Variables</li><li>• Probability Distributions</li><li>• Law of Large Numbers</li><li>• Concept of Independence</li><li>• Modes of Convergence</li></ul>
<b>GENERALIZED LINEAR MODELS</b> <ul style="list-style-type: none"><li>• Logistic Regression</li><li>• Poisson Regression</li><li>• Log Linear Models</li><li>• Family of GLM</li><li>• Power Class Link Functions</li><li>• Quasi Likelihood</li></ul>	<b>DESIGN OF EXPERIMENTS</b> <ul style="list-style-type: none"><li>• Linear Estimation and ANOVA</li><li>• Incomplete Block Design</li><li>• Finite field and finite geometry</li><li>• Factorial experiments</li><li>• Confounding</li><li>• Fractional factorial experiments</li></ul>	<b>STATISTICAL INFERENCE</b> <ul style="list-style-type: none"><li>• Sufficiency, Efficiency and MLE</li><li>• NP Lemma, LR Test, and Large Sample Tests</li><li>• Interval estimation</li><li>• SPRT, Non-Parametric Methods</li><li>• Rank Order, Linear Rank Statistics</li></ul>	<b>STOCHASTIC PROCESSES</b> <ul style="list-style-type: none"><li>• Poisson Process</li><li>• Birth Death Process</li><li>• Brownian Motion</li><li>• Branching Process</li><li>• Martingales</li></ul>



# APPLIED STATISTICS

The 2-year M.Sc. Statistics Programme seamlessly integrates essential training in statistical methods with real-world applications, effectively meeting the specific needs of various industries.

<b>STATISTICAL QUALITY CONTROL</b> <ul style="list-style-type: none"> <li>• Process Control and Product Control Charts</li> <li>• CUSUM Charts</li> <li>• V Mask &amp; Decision Interval Technique</li> <li>• Economic Design of X-bar chart</li> <li>• Sampling Inspection Plans</li> </ul>	<b>ADVANCED THEORY OF EXPERIMENTAL DESIGNS</b> <ul style="list-style-type: none"> <li>• Partially Balanced Incomplete Block Design</li> <li>• Fractional Factorial Plans and Orthogonal Arrays</li> <li>• Response Surface Designs</li> <li>• Robust Parameter Design</li> <li>• Mixture Experiments</li> <li>• Cross-over Designs</li> </ul>	<b>TIME SERIES &amp; FORECASTING</b> <ul style="list-style-type: none"> <li>• Time Series as a discrete parameter</li> <li>• Stochastic Processes</li> <li>• Moving Average, Auto Regressive, ARMA &amp; ARIMA Models</li> <li>• Exponential &amp; Adaptive Smoothing Models</li> </ul>	<b>OPERATIONAL RESEARCH</b> <ul style="list-style-type: none"> <li>• Linear Programming</li> <li>• Transportation problems</li> <li>• Simulations</li> <li>• Inventory Theory</li> <li>• Decision Analysis</li> </ul>	<b>FINANCIAL STATISTICS</b> <ul style="list-style-type: none"> <li>• Stochastic Calculus</li> <li>• Derivatives, Pricing &amp; Hedging</li> <li>• Random Walk, CRR Model</li> <li>• Black Scholes PDE, Martingales</li> <li>• Options, Forward Rates Modelling</li> </ul>
<b>ECONOMETRICS</b> <ul style="list-style-type: none"> <li>• GLM with Stochastic Regressors</li> <li>• Instrumental Variables</li> <li>• Bayesian Analysis of GLM</li> <li>• Distributed Lag Models</li> <li>• Simultaneous Equations Model</li> </ul>	<b>BIOSTATISTICS</b> <ul style="list-style-type: none"> <li>• Sensitivity, Specificity and ROC</li> <li>• Estimation of Odd's Ratio and Relative Risk</li> <li>• Survival Time Distribution</li> <li>• Planning and Designing</li> <li>• Clinical Trials</li> <li>• Mendelian Genetics and Inheritance</li> </ul>	<b>RELIABILITY</b> <ul style="list-style-type: none"> <li>• Reliability &amp; Expected Longevity of Different Types of Systems</li> <li>• Estimation of Reliability and Expected Survival Time for Censored Failure Time Data</li> <li>• Preventive Maintenance Policy</li> </ul>	<b>DEMOGRAPHY</b> <ul style="list-style-type: none"> <li>• Measures of Mortality and Fertility</li> <li>• Construction of different life tables</li> <li>• Relationships between life tables functions</li> <li>• Population Growth Models</li> <li>• Population Projection</li> </ul>	<b>DATA MINING</b> <ul style="list-style-type: none"> <li>• Artificial Neural Networks</li> <li>• Clustering and Market Segmentation</li> <li>• Principle Component Analysis</li> <li>• Regression Trees</li> <li>• Statistical Simulations</li> <li>• Expectation - Maximisation Algorithm</li> </ul>

# FOCUS AREAS





# INSIGHTS & ANALYTICS

## SPORTS ANALYTICS

Helps teams make strategic decisions that give them a competitive edge. Provides organizations with a competitive advantage through informed decision-making, helping them achieve success and stand out in their game.

## DATA SCIENCE

Unifies statistics, analysis, and related methods to transform data into actionable insights, empowering clients to make informed decisions. Leverages advanced techniques to analyze data and understand actual phenomena, helping clients increase profits and achieve targets.

## ACTUARIAL ANALYTICS

Helps organizations mitigate risk by providing services that focus on risk management. Services are designed to help organizations be proactive in managing risk, ensuring that they are better prepared to face potential challenges.

## RISK ANALYTICS

Helps to develop risk models that protect against unforeseen risks while optimizing profitability. Develop models that mitigate risk and protect the organization's products or services against potential harm.

## DATA ANALYSIS

Cleanses, transforms, and models data such that valuable insights can be unlocked, leading to informed decision-making with confidence. Enables the discovery of useful information and informative conclusions, providing a solid foundation for strategic decision-making.

## BUSINESS ANALYTICS

Involves valuable insights to optimize business processes. Utilizes data-driven approaches to unlock insights that help optimize business processes and drive growth.

# DOMAIN EXPERTISE

## DEMOGRAPHY

Delves into demographic processes to gain a deeper understanding of population dynamics. Seeks to understand population dynamics by analyzing demographic processes and trends.

## MARKET RESEARCH

Provides important information that helps to identify and analyze the needs of the market, market size, and competition. It also provides information that helps businesses understand their market by analyzing market needs, size, and competition.

## OPERATIONAL RESEARCH

Quantifies relevant factors and uses mathematical techniques to arrive at an optimal decision, helping to solve complex problems. Utilizes mathematical techniques to solve complex problems under uncertainty.

## BIOSTATISTICS

Involves translating data into meaningful information to make logical and beneficial public health decisions. Translates data into actionable insights, enabling public health decision-makers to make informed decisions.

## FINANCIAL STATISTICS

Uses past behavior and future forecasts to provide a comprehensive financial analysis of securities and markets. Utilizes statistical analysis to provide insights into financial data, enabling clients to understand their financial performance.

## CONSULTING

Paves the way for making suitable changes and analyzing business problems to find solutions that help the business thrive. Analyzes business problems and provides possible ways to deal with them, helping to make necessary changes for success.



**WHY**

---

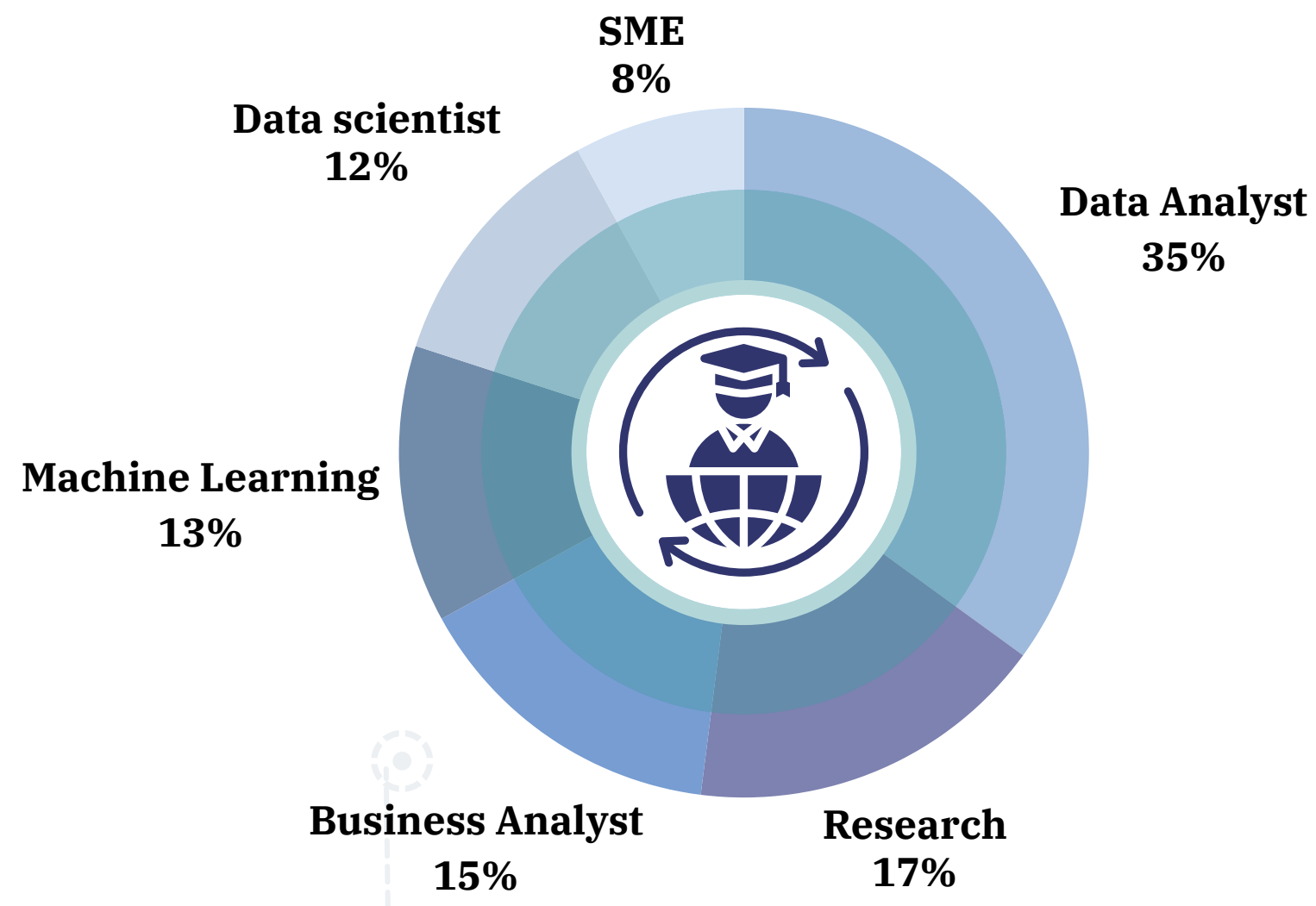
**HIRE US?**



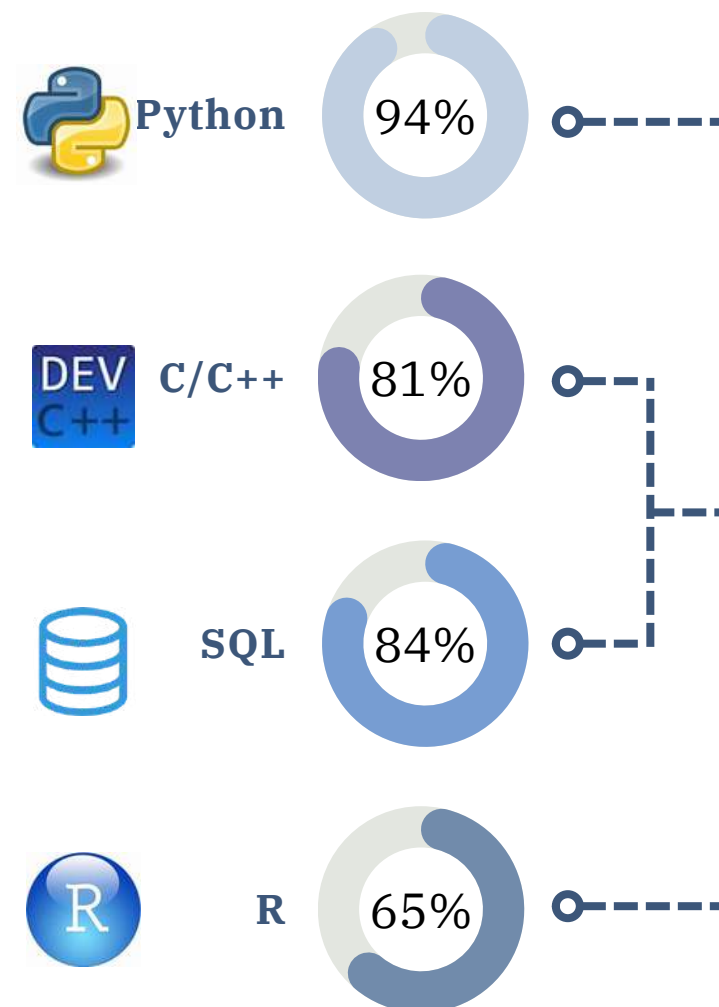
# CORE COMPETENCIES

We, the students of statistics, play a crucial role in today's world where a vast amount of data is being generated. We can apply technical and academic understanding to provide sound advice based on statistics. At the Department of Statistics, the focus is not only on academic understanding but on the overall development of the subject. We have been nurtured to inculcate and develop the aptitude for a wide range of statistical and analytical skills, including problem-solving and soft skills, to enable students to take prominent roles in a wide spectrum of employment and research.

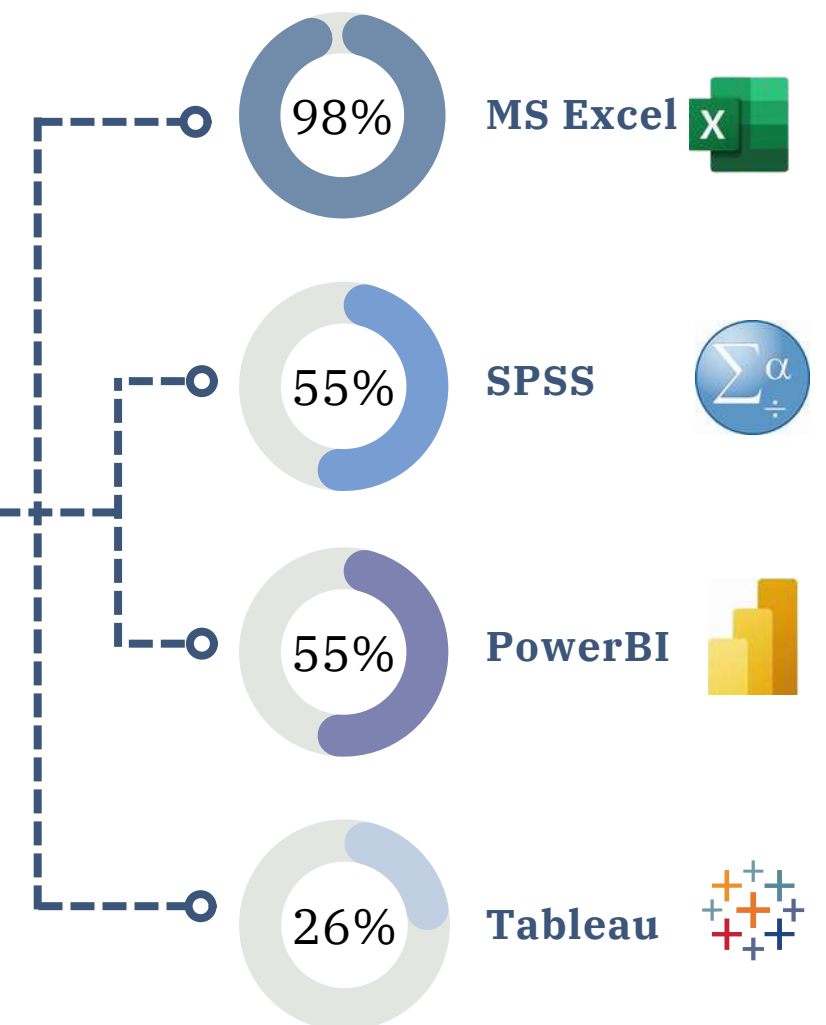
## FIELDS OF INTERNSHIPS



## LANGUAGES KNOWN

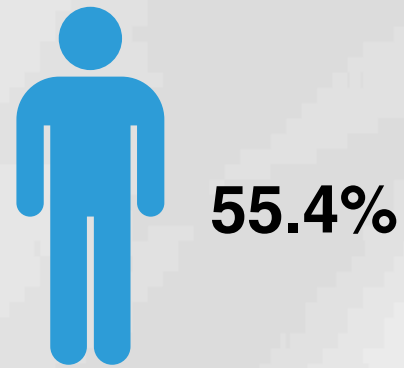


## SOFTWARES KNOWN

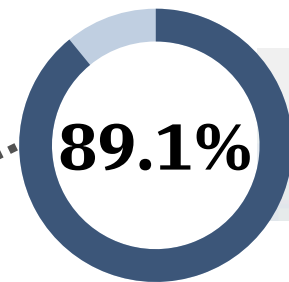
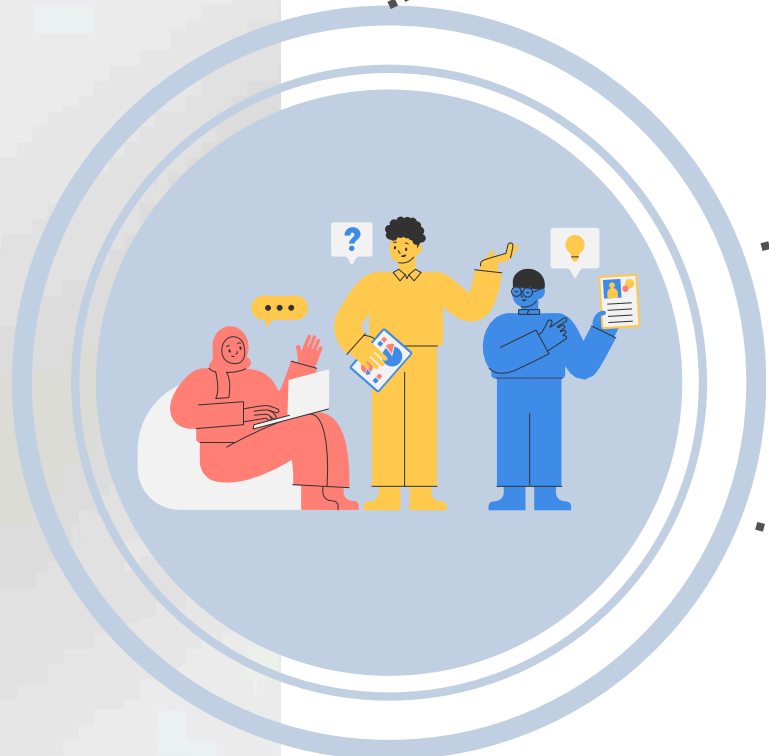
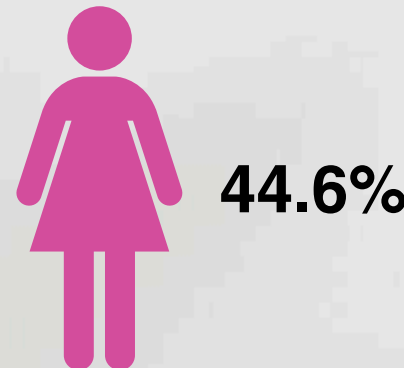




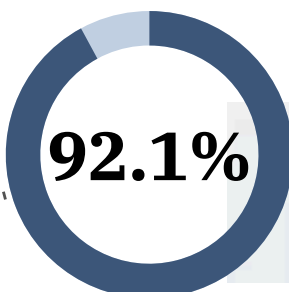
# BATCH STATISTICS



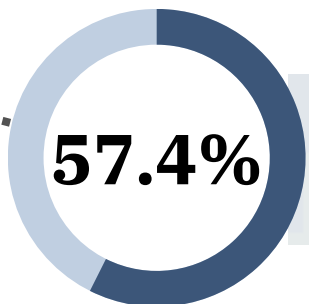
Gender Split



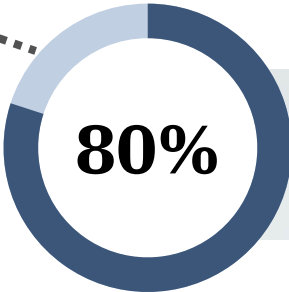
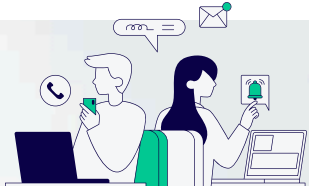
Graduated with a major in Statistics.



Students engaged in a statistical project.



Students with their internships in data domain.



Graduates from top colleges like Hindu, KMC, Ramjas, LSR, Venky, Presidency etc.



## AREAS OF EXPERTISE

- 95% Data Analysis
- 86% Machine Learning
- 75% Statistical Inference
- 68% Time Series Analysis
- 60% Probability Theory
- 55% Financial Statistics
- 51% Econometrics
- 45% Survey Sampling
- 40% Design of Experiment
- 40% Linear Models
- 32% Multivariate Analysis
- 31% Quality Control
- 30% Biostatistics

# PLACEMENT DETAILS

---





# PLACEMENT RECORDS

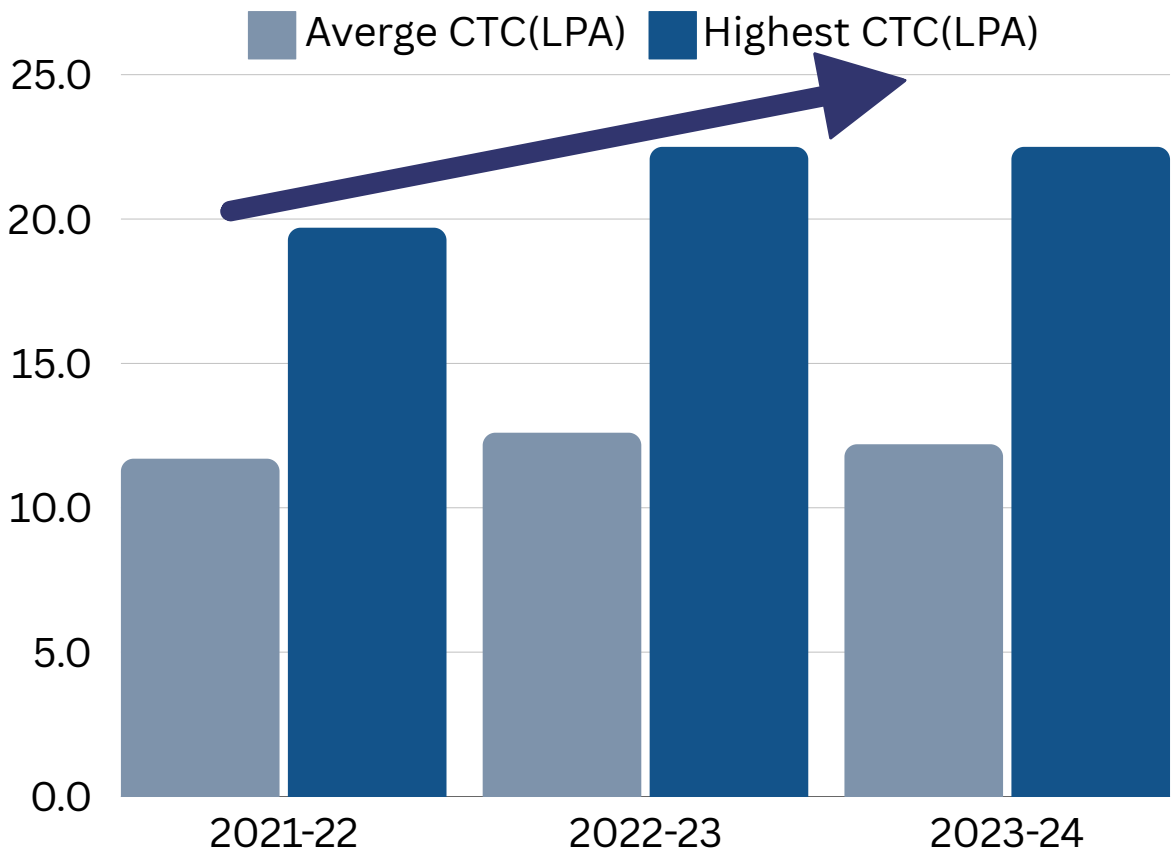
We are pleased to proclaim that **2023-24** has been a very fruitful session for Credence, with more than **75%** of students successfully placed in reputable organizations all over the country.

Highest CTC  
₹ 22.5  
LPA

Average CTC  
₹ 12.2  
LPA

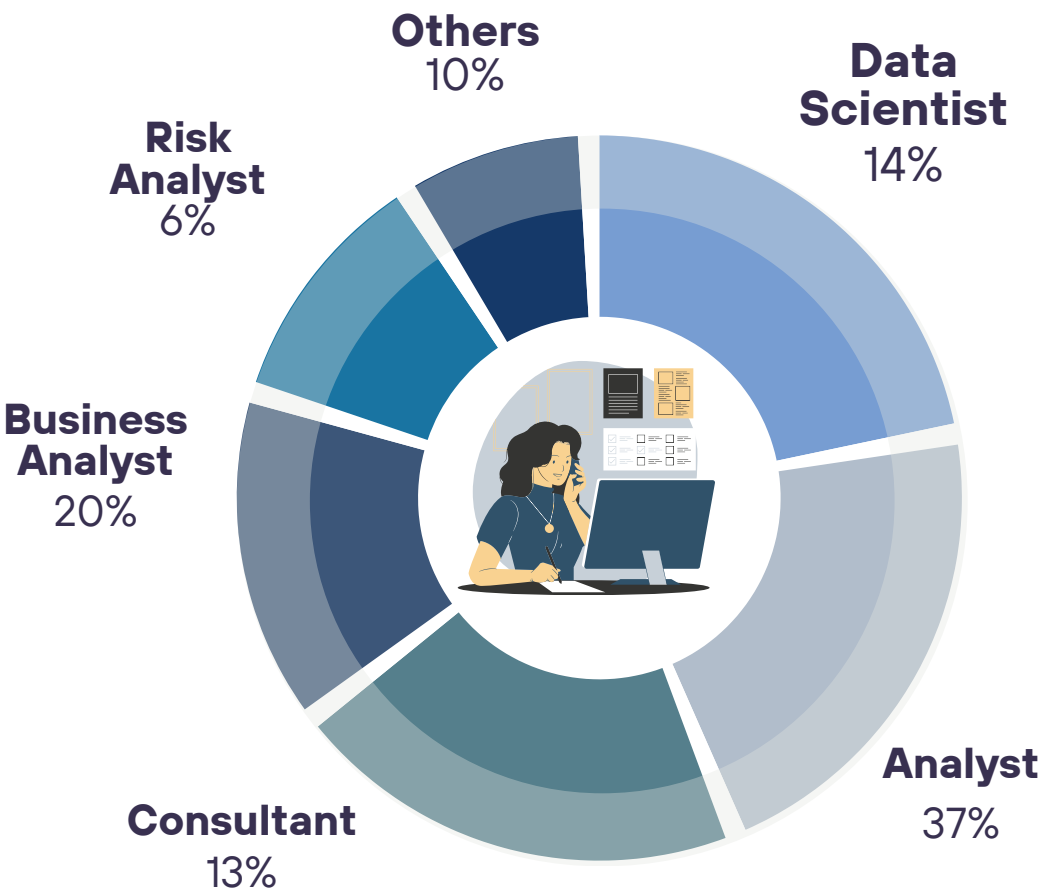
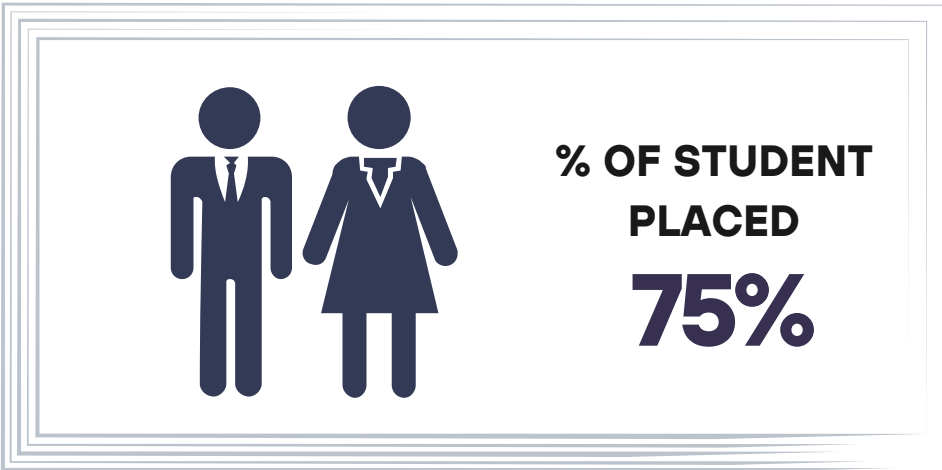
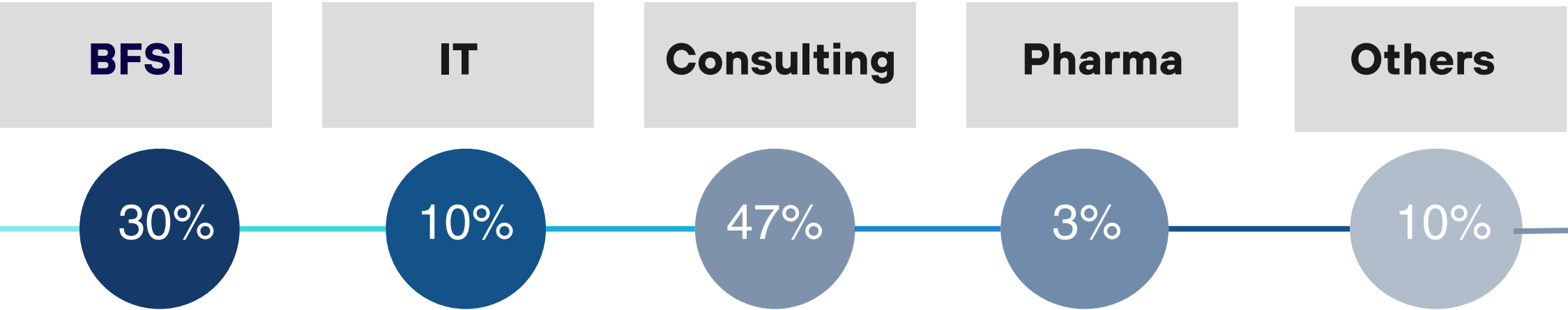
Median CTC  
₹ 11.9  
LPA

GROSS PACKAGE  
₹ 7.28  
CR  
  
TOP 25%  
₹ 14.46  
LPA



Increase in Package Offered

Placements Across Sectors



Profiles Offered

# SUMMER INTERNSHIPS

Our students participate in various internships offered by reputed companies, during summer vacations, both on and off-campus. They get a glimpse into a professional workspace and gain experience dealing with real-life problems.



**Deloitte.**

MOODY'S

Gartner®

**HDFC BANK**



**Teleperformance**  
each interaction matters



**SOCIETE GENERALE**



**AMERICAN EXPRESS**

fractal



**CRISIL**  
An S&P Global Company

**accenture**

**NOVARTIS**



**SAGACITO**  
INFORMED INTELLIGENCE



**Optum**



**SILVERNEURON**



**airtel**



**COGNITIO ANALYTICS**

**FICCI**

**vidooly**  
A Good Creator Co.

**IIITD** | INDRAPRASTHA INSTITUTE of  
INFORMATION TECHNOLOGY DELHI

**BRIDGEi2i**  
Part of Accenture

**MEDICOVER HOSPITALS**

**STU**

**THE Smart Cube**  
A WNS COMPANY

**Σigma**

**Evelyn Learning**  
Create. Engage. Inspire.



**JAN ELAAJ**



# PAST RECRUITERS



Moody's



A Moody's  
Analytics  
Company



Deloitte.



EVALUESERVE



Gartner®



loyaltytics.ai



NIQ



WNS



.Kreate





# PAST RECRUITERS





# NOTABLE ALUMNI



# NOTABLE ALUMNI



**AANCHAL KAURA**

2011-2013

**AXIS BANK**

Assistant Vice President



**MANU ARORA**

2011-2013

**AMAZON**

Business Analyst



**RACHITA GUPTA**

2012-2014

**JP MORGAN**

Assistant Vice President



**ANSHULA BATRA**

2011-2013

**BAIN & COMPANY**

Manager



**RASHI UPPAL**

2012-2014

**AMERICAN EXPRESS**

Director



**KRITI SAREEN**

2017-2019

**MASTERCARD**

Data Science Consultant



**GAURAV KOHLI**

2011-2013

**McKINSEY COMPANY**

Manager



**ANKITA SHARMA**

2012-2014

**AXTRIA**

Senior Manager



**PULKIT KAPOOR**

2012-2014

**BARCLAYS**

AVP: AI & ML



# NOTABLE ALUMNI



**SHEKHAR GERA**

2013-2015

**BCG**

Senior Data Analyst



**ARPITA HOM**

2014-2016

**MOODY'S**

Assistant Director



**DEBAPRIYA MAJUMDAR**

2015-2017

**WALMART**

Senior Data Scientist



**APORUPA BOSE**

2013-2015

**DELOITTE UK**

Senior Manager



**BIDYUT KUMAR RAKSHIT**

2014-2016

**HDFC**

Assistant Vice President



**PARWEZ ALAM**

2016-2018

**PWC INDIA**

Consulting Specialist



**ANISHA KOHLI**

2013-2015

**CITI**

Manager



**SHIVANGI RAMAN**

2016-2018

**Mc KINSEY**

Senior Capabilities & Insights Analyst



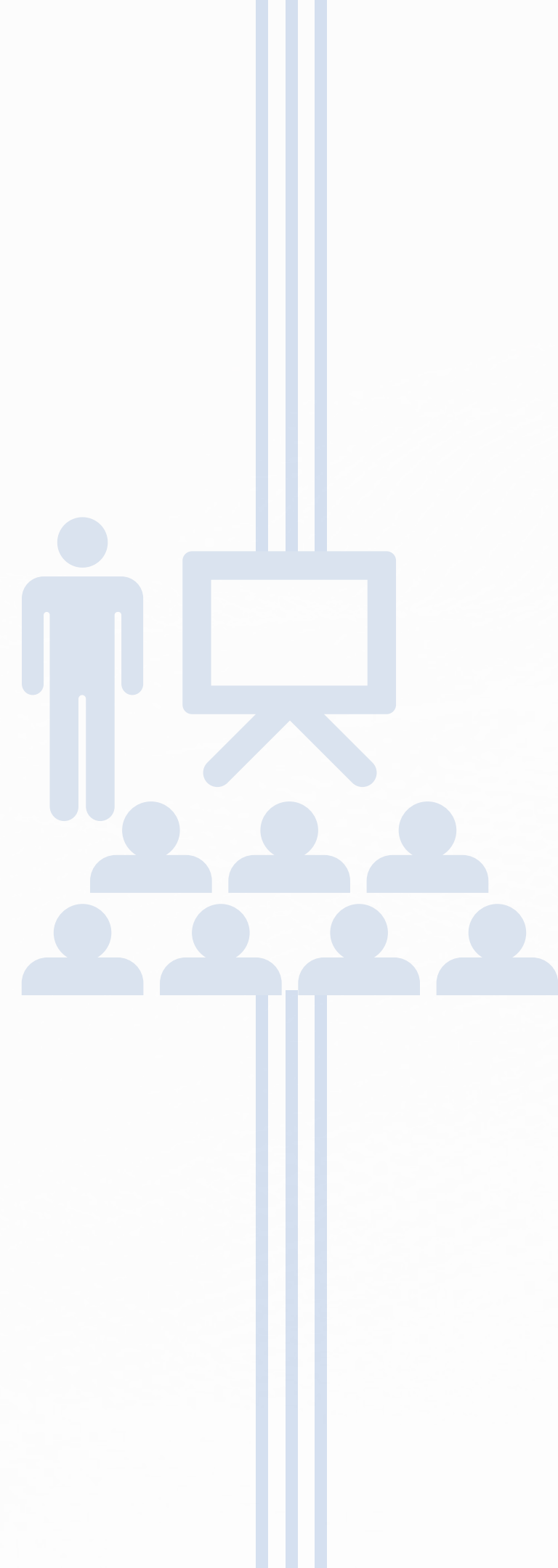
**Rabia Brar**

2015-2017

**BARCLAYS**

Assistant Vice President

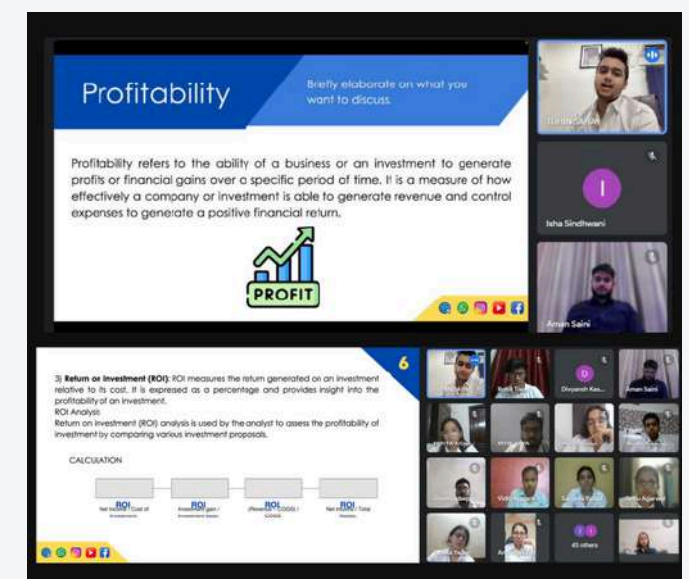
# **SESSIONS CONDUCTED BY CREDENCE**





# SESSIONS CONDUCTED BY CREDENCE

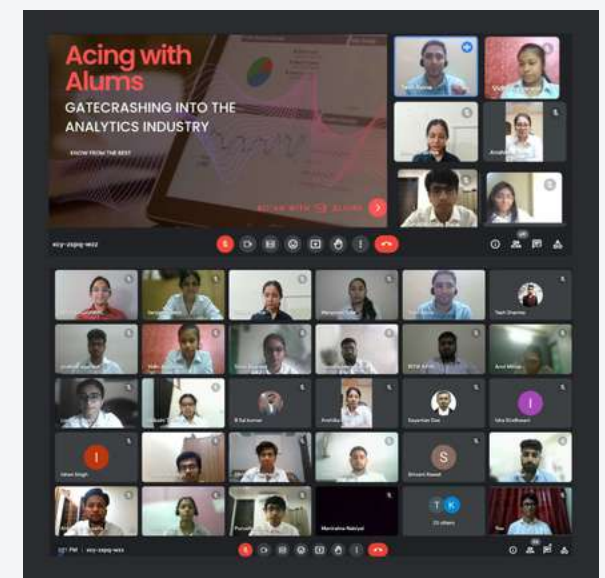
- **Workshop on “SQL: Basic to Advanced”** – (April 6th-7th, 2024) on the topic **“SQL: Basic to Advanced”** with **Mr. Deepak Kumar Singh** (Staff Machine Learning Engineer, InMobi).
- **Alumni Engagement Session** - (March 10th, 2024) on the topic **“Empowering wellness and wealth: The AI revolution in banking and health”** by our alumni **Mr. Lokesh Sharma** (Data Scientist, RBI), batch of 2018.
- **Engagement Session by Mastercard** – (February 29th, 2024) on the topic **“Data Science and the future of Artificial Intelligence (AI) in financial services”** by **Mr. Dinesh Lal** (Director, Mastercard), **Mr. Charanjit Singh** (Regional Campus Lead, Mastercard).
- **PHUSE India University Connect Event** – (February 24th, 2024) in association with Department of Mathematics, University of Delhi on the topic **“Industry-academia trends and job opportunities in the pharmaceutical and clinical research sectors”** by **Mr. Gagandeep Singh Saini** (Regional Membership Officer at PHUSE).





# SESSIONS CONDUCTED BY CREDENCE

- **Engagement Session by Mastercard** - (November, 2023) on the topic “**Applications of statistics and machine learning in finance**” by **Mr. Deepak Agarwal** (Senior Managing Consultant, Mastercard).
- **Webinar on Machine learning operations** - (November, 2023) on the topic “**Effective MLOps using weights & biases**” by **Ms. Usha Rengaraju** (Machine learning expert).
- **Acing with Alums Webinar** - (November, 2023) on the topic “**Real-world case studies and interview tips**” by **Mr. Yash Raina** (Advanced Analytics, Data Science & Management Consulting).
- **Case studies and interview preparation workshop series** - (November 20- 22, 2023) on the topic “**Techniques for case studies and interviews**” by **Mr. Devan Bhalla** (Integrated Marketer).
- **Case studies and interview preparation workshop series** - (November 10- 13, 2023) on the topic “**Techniques for case studies and interviews**” by **Mr. Tuhin Kumar Saha**(Financial Expert), **Mr. Pratik Ranjan** (Consultant, Boston Consulting Group).





# BATCH

---

# DETAILS



# BATCH PROFILE



**Ansh Malhotra**

**Languages:** Python, R, MATLAB  
**Softwares:** Excel, SPSS, Wolfram  
**Focus Area:** Data Analysis, Machine Learning, Statistical Inference



**Siddhartha Biswas**

**Languages:** Python, R  
**Softwares:** Excel, SPSS  
**Focus Area:** Data Analysis, Machine Learning, Statistical Inference



**Samrendra**

**Languages:** Python, R  
**Softwares:** Excel, SPSS  
**Focus Area:** Data Analysis, Machine Learning, Statistical Inference



**Kartik Pandey**

**Languages:** Python, R, C, SQL  
**Softwares:** Excel, SPSS  
**Focus Area:** Data Analysis, Machine Learning, Time Series



**Aryan Yadav**

**Languages:** Python, R, C++, SQL  
**Softwares:** Excel, SPSS, Power BI  
**Focus Area:** Data Analysis, Machine Learning, Statistical Quality Control



**Aishwarya Prasannan**

**Languages:** Python, R  
**Softwares:** Excel, SPSS  
**Focus Area:** Data Analysis, Machine Learning, Statistical Inference



**Anagani Bhavani**

**Languages:** Python, R  
**Softwares:** Excel, SPSS  
**Focus Area:** Data Analysis, Machine Learning, Statistical Inference



**Harsh Jain**

**Languages:** Python, R, C  
**Softwares:** Excel, SPSS  
**Focus Area:** Data Analysis, Machine Learning, Statistical Inference



**Abhinav Awasthi**

**Languages:** Python, R  
**Softwares:** Excel, SPSS  
**Focus Area:** Data Analysis, Machine Learning, Statistical Inference,



**Ankita Bhandari**

**Languages:** Python, R, C, SQL  
**Softwares:** Excel, SPSS, Power BI  
**Focus Area:** Data Analysis, Machine Learning, Time Series



# BATCH PROFILE



**Himanshu Srivastava**

**Languages:** Python, R

**Softwares:** Excel, SPSS

**Focus Area:** Data Analysis, Machine Learning, Statistical Inference



**Nikita**

**Languages:** Python, R

**Softwares:** Excel, SPSS

**Focus Area:** Data Analysis, Machine Learning, Statistical Inference



**Mitushi Middha**

**Languages:** Python, R, SQL

**Softwares:** Excel, SPSS, Tableau

**Focus Area:** Data Analysis, Machine Learning, Statistical Inference.



**Shreya Chakraborty**

**Languages:** Python, R

**Softwares:** Excel, SPSS

**Focus Area:** Data Analysis, Machine Learning, Statistical Inference



**Khushi Bansal**

**Languages:** Python, R, C, SQL

**Softwares:** Excel, SPSS

**Focus Area:** Data Analysis, Machine Learning, Linear Model



**Aryan Khokhar**

**Languages:** Python, R

**Softwares:** Excel, SPSS

**Focus Area:** Data Analysis, Machine Learning, Statistical Inference



**Nikhil Kumar**

**Languages:** Python, R

**Softwares:** Excel, SPSS

**Focus Area:** Data Analysis, Machine Learning, Statistical Inference



**Anirudh Sen Sharma**

**Languages:** Python, R, C, SQL

**Softwares:** Excel, SPSS, Power - BI

**Focus Area:** Data Analysis, Machine Learning, Financial Statistics



**Anjali Jain**

**Languages:** Python, R

**Softwares:** Excel, SPSS

**Focus Area:** Data Analysis, Machine Learning, Statistical Inference,



**Priya Jain**

**Languages:** Python, R, C, SQL

**Softwares:** Excel, SPSS

**Focus Area:** Data Analysis, Machine Learning, Statistical Inference

# BATCH PROFILE



**Parul Garg**

**Languages:** Python, R  
**Softwares:** Excel, SPSS  
**Focus Area:** Data Analysis, Machine Learning, Statistical Inference



**Garima Yadav**

**Languages:** Python, R  
**Softwares:** Excel, SPSS  
**Focus Area:** Data Analysis, Machine Learning, Statistical Inference



**Kritika Arora**

**Languages:** Python  
**Softwares:** Excel, SPSS  
**Focus Area:** Data Analysis, Statistical Quality Control, Survey Sampling



**Pranjal Pawase**

**Languages:** Python, R  
**Softwares:** Excel, SPSS  
**Focus Area:** Data Analysis, Machine Learning, Statistical Inference



**Bhavya Mishra**

**Languages:** Python, R, C, SQL  
**Softwares:** Excel, Power BI  
**Focus Area:** Data Analysis, Machine Learning, Statistical Inference



**Karan Sharma**

**Languages:** Python, R, C, SQL  
**Softwares:** Excel, SPSS, Power BI  
**Focus Area:** Data Analysis, Machine Learning, Statistical Inference



**Prajwal Soni**

**Languages:** Python, R  
**Softwares:** Excel, SPSS  
**Focus Area:** Data Analysis, Machine Learning, Statistical Inference



**Yusuf Ahmed**

**Languages:** Python, R  
**Softwares:** Excel, SPSS  
**Focus Area:** Data Analysis, Machine Learning, Statistical Inference



**Anubhav Bhatnagar**

**Languages:** Python, SQL  
**Softwares:** Excel, Power BI  
**Focus Area:** Data Analysis, Machine Learning, Survey Sampling,



**Bhawana Singh**

**Languages:** Python, C, SQL  
**Softwares:** Excel, SPSS  
**Focus Area:** Machine Learning, Statistical Inference, Econometrics



# BATCH PROFILE



**Arushi Aggarwal**

**Languages:** Python, C, SQL  
**Softwares:** Excel, Power BI, Tableau  
**Focus Area:** Data Analysis, Machine Learning, Statistical Inference



**Pakki V.P. Karthikeya**

**Languages:** Python, R  
**Softwares:** Excel, SPSS  
**Focus Area:** Data Analysis, Machine Learning, Statistical Inference



**Mithilesh Kumar Pandey**

**Languages:** Python, R, SQL, Java  
**Softwares:** Excel, SPSS, Power BI  
**Focus Area:** Data Analysis, Machine Learning, Financial Statistics



**Sruthi Raj C R**

**Languages:** Python, R  
**Softwares:** Excel, SPSS  
**Focus Area:** Data Analysis, Machine Learning, Statistical Inference



**Srishti Sunehra**

**Languages:** Python, R  
**Softwares:** Excel, SPSS  
**Focus Area:** Data Analysis, Machine Learning, Statistical Inference



**Shivam Maurya**

**Languages:** Python, R  
**Softwares:** Excel, SPSS  
**Focus Area:** Data Analysis, Machine Learning, Statistical Inference



**Tashika**

**Languages:** Python, R  
**Softwares:** Excel, SPSS  
**Focus Area:** Data Analysis, Machine Learning, Statistical Inference



**Saima Talat**

**Languages:** Python, R  
**Softwares:** Excel, SPSS  
**Focus Area:** Data Analysis, Machine Learning, Statistical Inference



**Saptarshi Nandi**

**Languages:** Python, R  
**Softwares:** Excel, SPSS  
**Focus Area:** Data Analysis, Machine Learning, Statistical Inference



**Somdev Singh**

**Languages:** Python, R  
**Softwares:** Excel, SPSS  
**Focus Area:** Data Analysis, Machine Learning, Statistical Inference

# BATCH PROFILE



**Swagato Karmakar**

**Languages:** Python, R  
**Softwares:** Excel, SPSS  
**Focus Area:** Data Analysis, Machine Learning, Statistical Inference



**Vrinda Sharma**

**Languages:** Python, R, C, SQL  
**Softwares:** Excel, SPSS, Power BI  
**Focus Area:** Data Analysis, Machine Learning, Statistical Inference



**Ashish Kumar Singh**

**Languages:** C  
**Softwares:** Excel  
**Focus Area:** Data Analysis, Machine Learning, Biostatistics



**Shatakshi Mehrotra**

**Languages:** Python, R  
**Softwares:** Excel, SPSS  
**Focus Area:** Data Analysis, Machine Learning, Statistical Inference



**Souridya Dey**

**Languages:** Python, R  
**Softwares:** Excel, SPSS  
**Focus Area:** Data Analysis, Machine Learning, Statistical Inference



**Gaurav Kumawat**

**Languages:** Python, R  
**Softwares:** Excel, SPSS  
**Focus Area:** Data Analysis, Machine Learning, Statistical Inference



**Bhawna Sharma**

**Languages:** Python, C  
**Softwares:** Excel, Power BI  
**Focus Area:** Data Analysis, Machine Learning, Financial Statistics



**Yash Prasad**

**Languages:** Python, R, C, SQL  
**Softwares:** Excel  
**Focus Area:** Data Analysis, Machine Learning, Statistical Inference



**Tanisha Singh**

**Languages:** R,C,C++  
**Softwares:** Excel, SPSS  
**Focus Area:** Data Analysis, Biostatistics Multivariate Analysis



**Priyanka Sharma**

**Languages:** C, SQL  
**Softwares:** Excel, SPSS, Power BI  
**Focus Area:** Data Analysis, Statistical Quality Control, Time Series



# BATCH PROFILE



**Aayushi Saini**

**Languages:** R, C  
**Softwares:** Excel, SPSS  
**Focus Area:** Data Analysis, Machine Learning, Biostatistics



**Abhinav Kumar Singh**

**Languages:** Python, C, Java  
**Softwares:** Excel, SPSS  
**Focus Area:** Data Analysis, Econometrics, Statistical Inference



**Abhishek Kumar**

**Languages:** Python, C, SQL  
**Softwares:** Excel, Power -BI  
**Focus Area:** Data Analysis, Machine Learning, Financial Statistics



**Ajeet Kumar Patel**

**Languages:** Python, R, C, C++, SQL  
**Softwares:** Excel  
**Focus Area:** Data Analysis, Machine Learning, Statistical Inference



**Aman Prakash**

**Languages:** Python, R, C, SQL  
**Softwares:** Excel, SPSS  
**Focus Area:** Data Analysis, Machine Learning, Financial Statistics



**Amishi**

**Languages:** Python, R  
**Softwares:** Excel, SPSS  
**Focus Area:** Data Analysis, Machine Learning, Statistical Inference



**Dipanshu**

**Languages:** Python, C, SQL, R  
**Softwares:** Excel, Power BI  
**Focus Area:** Data Analysis, Machine Learning, Financial Statistics



**Sushanta Dutta**

**Languages:** Python, R, C, SQL  
**Softwares:** Excel, SPSS, Power - BI  
**Focus Area:** Data Analysis, Machine Learning, Financial Analysis



**Bidhi Pradhan**

**Languages:** R,C++,Mathematica,Latex  
**Softwares:** Excel, SPSS, Latex  
**Focus Area:** Data Analysis, Econometrics,



**Cheshta Dhingra**

**Languages:** Python, R, C++, SQL  
**Softwares:** Excel, SPSS, Power BI  
**Focus Area:** Data Analysis, Machine Learning, Financial Statistics

# BATCH PROFILE



**Harshit Budakoti**

**Languages:** Python, C, SQL

**Softwares:** Excel, Tableau

**Focus Area:** Data Analysis, Machine Learning, Statistical Inference



**Agneebha Ghosh**

**Languages:** Python, R

**Softwares:** Excel, SPSS

**Focus Area:** Data Analysis, Machine Learning, Statistical Inference



**Gaurav Yadav**

**Languages:** R, C, Java

**Softwares:** Excel, SPSS

**Focus Area:** Data Analysis, Statistical Inference, Survey Sampling



**Vikas Kumar**

**Languages:** Python, R, C

**Softwares:** Excel, SPSS

**Focus Area:** Data Analysis, Machine Learning, Biostatistics



**Deeba Fatima**

**Languages:** Python, C, SQL

**Softwares:** Excel, Power - BI

**Focus Area:** Data Analysis, Econometrics, Financial Statistics



**Himanshi Gautam**

**Languages:** Python, R, C, SQL

**Softwares:** Excel, SPSS, Power - BI

**Focus Area:** Data Analysis, Machine Learning, Econometrics



**Himanshu Yadav**

**Languages:** Python, R, C, C++, SQL

**Softwares:** Excel

**Focus Area:** Data Analysis, Machine Learning, Financial Statistics



**Indrajeet Kumar**

**Languages:** Python, R, C, C++, SQL

**Softwares:** Excel, Tableau, SPSS

**Focus Area:** Data Analysis, Machine Learning, Biostatistics



**Ishaan Chawla**

**Languages:** Python, R, C++, SQL, Java

**Softwares:** Excel, Power - BI, SPSS

**Focus Area:** Data Analysis, Machine Learning, Econometrics



**Sovarka Ranjan Biswas**

**Languages:** Python, C, C++, SQL

**Softwares:** Excel, Power - BI

**Focus Area:** Data Analysis, Machine Learning, Statistical Inference



# BATCH PROFILE



**Vanshika Tiwari**

**Languages:** Python, R, C

**Softwares:** Excel, SPSS

**Focus Area:** Data Analysis, Machine Learning, Statistical Inference



**Prerana Kuila**

**Languages:** Python, C++, SQL

**Softwares:** Excel, SAS, Power - BI

**Focus Area:** Data Analysis, Machine Learning, Multivariate



**Khushi Singh**

**Languages:** Python, C, SQL

**Softwares:** Excel

**Focus Area:** Data Analysis, Machine Learning, Biostatistics



**Manav Bhalla**

**Languages:** Python, SQL

**Softwares:** Excel, SPSS, Tableau

**Focus Area:** Data Analysis, Machine Learning, Design Of Experiments



**Aman Kumar**

**Languages:** Python, C, C++

**Softwares:** Excel, SPSS

**Focus Area:** Data Analysis, Financial statistics, Statistical Inference



**Ravinandan Kumar Rana**

**Languages:** Python, R, C++, SQL

**Softwares:** Excel, SPSS, Power - BI

**Focus Area:** Data Analysis, Machine Learning, Survey Sampling



**Naman Pratap Singh**

**Languages:** Python

**Softwares:** Excel

**Focus Area:** Data Analysis, Statistical Inference



**Tavishi Sharma**

**Languages:** R, C++, SQL

**Softwares:** Excel, SPSS, Tableau

**Focus Area:** Data Analysis, Machine Learning, Statistical Inference



**Namrta**

**Languages:** Python, R, C, SQL

**Softwares:** Excel, SPSS

**Focus Area:** Data Analysis, Biostatistics, Econometrics



**Nandini Karmakar**

**Languages:** Python, C, C++, R, SQL

**Softwares:** Excel, SPSS

**Focus Area:** Data Analysis, Statistical Quality Control, Time Series

# BATCH PROFILE



**Nisha Jain**

**Languages:** Python, C

**Softwares:** Excel

**Focus Area:** Data Analysis, Machine Learning, Econometrics



**Preeti**

**Languages:** Python, R, C++, SQL

**Softwares:** Excel, SPSS

**Focus Area:** Data Analysis, Machine Learning, Time Series Analysis



**Ritam Saha**

**Languages:** Python, R, C++, SQL

**Softwares:** Excel, Power - BI

**Focus Area:** Data Analysis, Probability Theory Statistical Inference



**Prince Tiwari**

**Languages:** Python, C

**Softwares:** Excel

**Focus Area:** Data Analysis, Machine Learning



**Rakesh Gupta**

**Languages:** Python, R, C

**Softwares:** Excel, SPSS, Power - BI

**Focus Area:** Data Analysis, Survey Sampling, Statistical Inference



**Rishabh Gupta**

**Languages:** Python, C, C++, SQL

**Softwares:** Excel

**Focus Area:** Data Analysis, Machine Learning, Financial Statistics



**Rishottam Biswas**

**Languages:** Python, R, C

**Softwares:** Excel

**Focus Area:** Time Series, Financial Statistics, Econometrics



**Sukrit Ghosh**

**Languages:** Python, R, C, SQL

**Softwares:** Excel, Tableau, Power - BI

**Focus Area:** Data Analysis, Probability Theory Statistical Inference,



**Spandan Bhattacharjee**

**Languages:** Python, R, C, SQL

**Softwares:** Excel, SPSS

**Focus Area:** Data Analysis, Machine Learning, Financial Statistics



**Ritika Sundrani**

**Languages:** Python, R, C, C++, Java

**Softwares:** Excel, SPSS

**Focus Area:** Data Analysis, Biostatistics, Probability Theory



# BATCH PROFILE



**Riya Malhotra**

**Languages:** Python, R, C, C++, SQL

**Softwares:** Excel, SPSS, Tableau

**Focus Area:** Data Analysis, Machine Learning, Biostatistics



**Wasim Bhati**

**Languages:** R,C,C++,SQL

**Softwares:** Excel, Wolfram, Tora

**Focus Area:** Data Analysis, Machine Learning, Statistical Inference



**Swathi Sudhakaran**

**Languages:** Python, R

**Softwares:** Excel, Power - BI

**Focus Area:** Data Analysis, Machine Learning, Time Series Analysis



**Shubham Chaurasia**

**Languages:** Python, R, C, SQL

**Softwares:** Excel, SPSS

**Focus Area:** Data Analysis, Machine Learning, Financial Statistics



**Smriti Dixit**

**Languages:** Python, SQL

**Softwares:** Excel, SPSS, Tableau

**Focus Area:** Data Analysis, Time Series, Generalized Linear Model



**Sneha Barman**

**Languages:** Python, R, C

**Softwares:** Excel

**Focus Area:** Data Analysis, Biostatistics, Machine Learning



**Snehashis Halder**

**Languages:** Python, R, C, C++

**Softwares:** Excel

**Focus Area:** Data Analysis, Machine Learning, Econometrics



**Sunny Chaudhary**

**Languages:** Python, R, C, C++, SQL

**Softwares:** Excel, SPSS, Power BI

**Focus Area:** Data Analysis, Machine learning, Financial Statistics



**Anuj Pandey**

**Languages:** Python, R, C

**Softwares:** Excel

**Focus Area:** Data Analysis, Machine Learning, Time Series



**Mridu Rana**

**Languages:** Python, SQL

**Softwares:** Excel

**Focus Area:** Data Analysis, Machine Learning, Time Series

# BATCH PROFILE



**Raghav Kush**

**Languages:** R, C, SQL

**Softwares:** Excel, SPSS

**Focus Area:** Data Analysis, Financial statistics, Survey Sampling



**Swarnava Raha**

**Languages:** Python, R, C, SQL

**Softwares:** Excel, SPSS, Power BI

**Focus Area:** Data Analysis, Machine Learning, Statistical Inference



**Ishita Singh**

**Languages:** Python, R, C++, SQL

**Softwares:** Excel, SPSS, Power BI

**Focus Area:** Data Analysis, Multivariate Analysis, Financial Statistics



## CREDENCE: THE PLACEMENT CELL



**Harsh Jain**

+91 81681 45688

**Karan Sharma**

+91 73035 72608

**Samrendra**

+91 98898 52472

**Yusuf Ahmed**

+91 70446 78546

**Shreya Chakraborty**

+91 91631 46973

**Priya Jain**

+91 96437 60824

**Mitushi Middha**

+91 63970 76565

**Dr. Devendra Kumar**  
Co-ordinator

**Dr. Mahendra Saha**  
Co-ordinator

✉ [placementcell@stats.du.ac.in](mailto:placementcell@stats.du.ac.in)





# DEPARTMENT OF STATISTICS

## Faculty of Mathematical Sciences, University of Delhi

 University Campus, North Delhi, Delhi - 110007

 [statistics.du.ac.in/](https://statistics.du.ac.in/)

 [linkedin.com/school/statsdu/mycompany/](https://linkedin.com/school/statsdu/mycompany/)